



Audioblast

ACID BOX

Owner's Manual





CONTENT

Windows

1) Main features	3
2) Installation	4
a) Run the installer AcidBoxVST-Installer.exe	4
b) Confirm the 32 Bit VST2 Plugin Directory.....	5
c) Confirm the 64 Bit VST2 Plugin Directory.....	6
d) Select witch components should be installed.....	7
e) Ready to Install.....	8
f) Finish the installation	9
3) Activation	10
4) Panel Descriptions	11
5) Basic Operations	15
a) Synchronisation.....	15
b) The Play Bar.....	16
c) Sequencer	18
d) Patterns	20
6) Effects	22
a) Distortion.....	22
b) Delay	23
7) Tools bar	24
a) Edit	24
b) Import.....	26
c) Export.....	26
8) MIDI.....	27
a) MIDI in.....	27
b) MIDI out.....	27



1) Main features

Welcome to the Acid Box!

The Acid Box is a Bass Line Synthesizer, a recreation of the iconic TB-303 Bass Line synth* with a new interface and some more features. Which makes it easier for you to create real-time sequences and tweak them in a live situation.

- You can use it as a standalone application, or as a plugin, with VST host software.
- 4 control modes: host sync, internal sync, MIDI sync, Midi In.
- Up to 32 patterns, you can also load patterns banks and trigger them in studio or live situations.
- 4 Distortion units with different grains.
- 1 Delay, with sync and ping pong mode.
- 1 Sequencer, with midi in keyboard input to ease your sequencing.
- Various ways and options to export or import your sequences, patterns and banks in multiple formats.

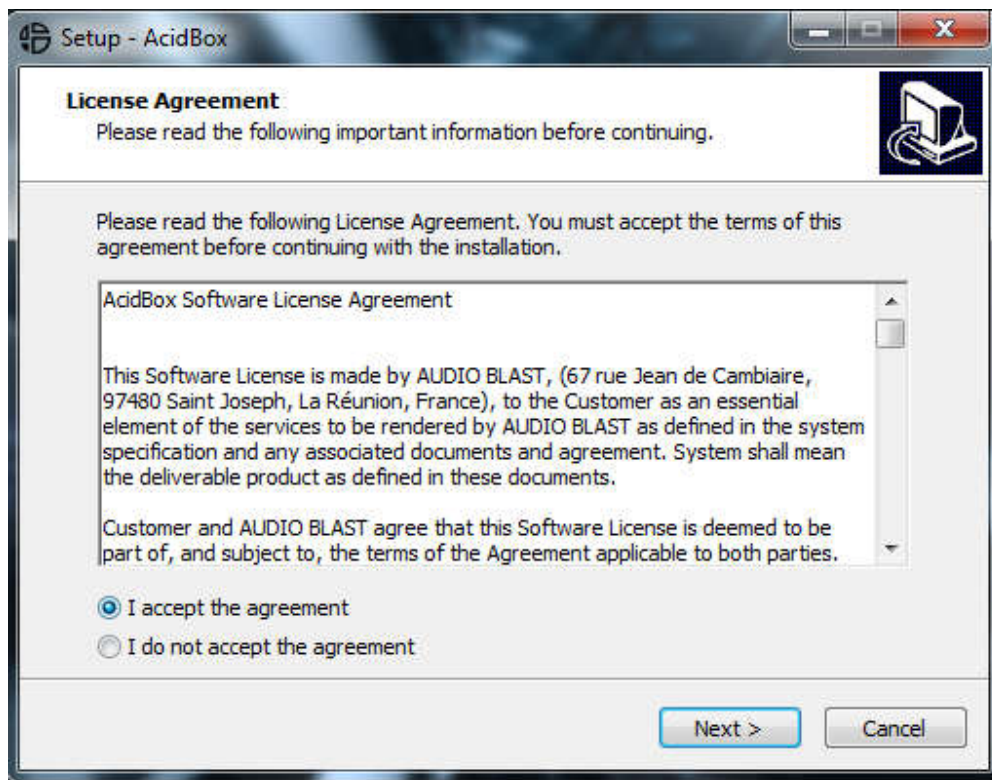
All are very easy to use.

(* meaning/ synthesizer)



2) Installation

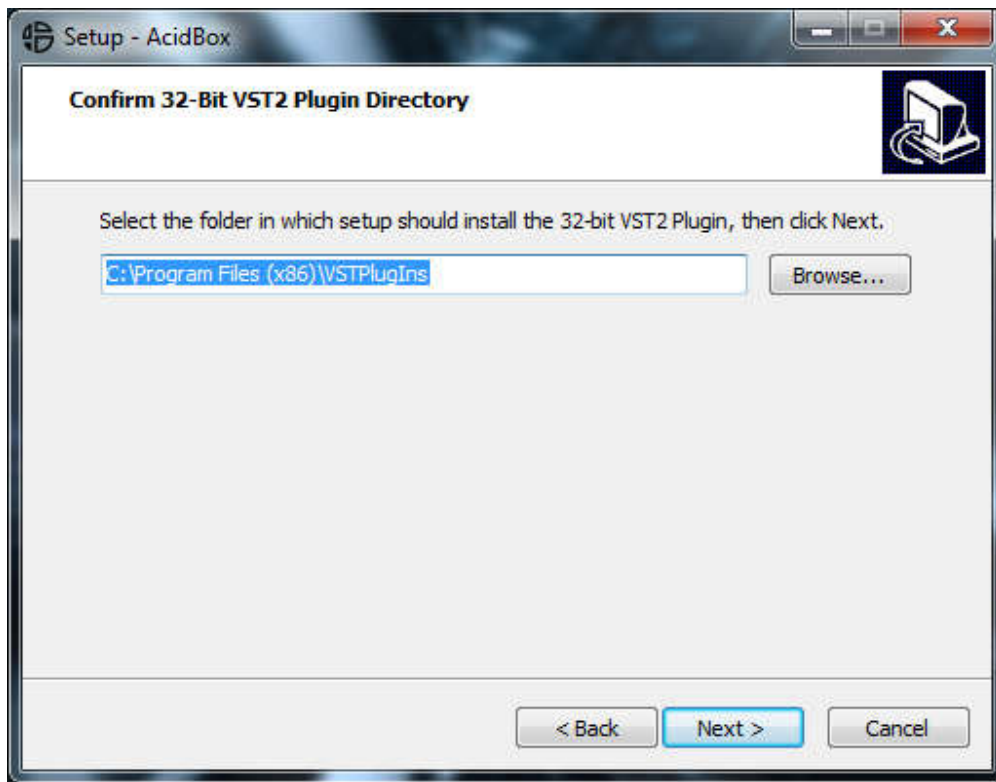
a) Run the installer AcidBoxVST-Installer.exe



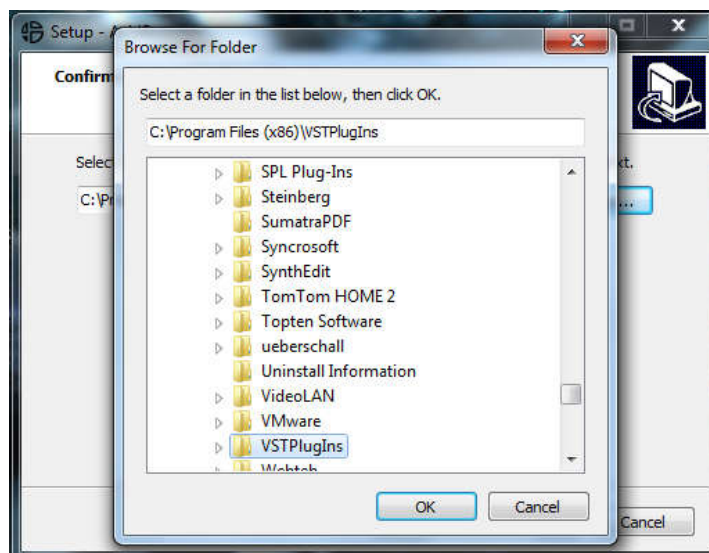
Accept the agreement and then click the “**Next**” button.



b) **Confirm the 32 Bit VST2 Plugin Directory**

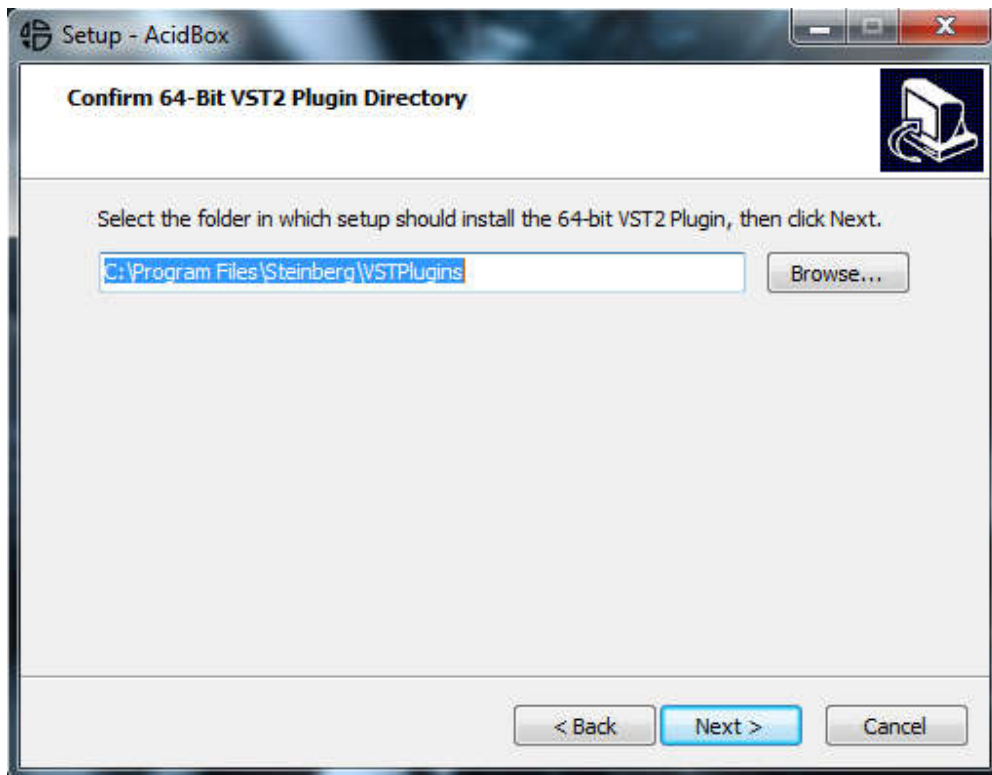


You choose your own directory by clicking the **“Browse...”** button, a browser window will appear, and then select your own folder.





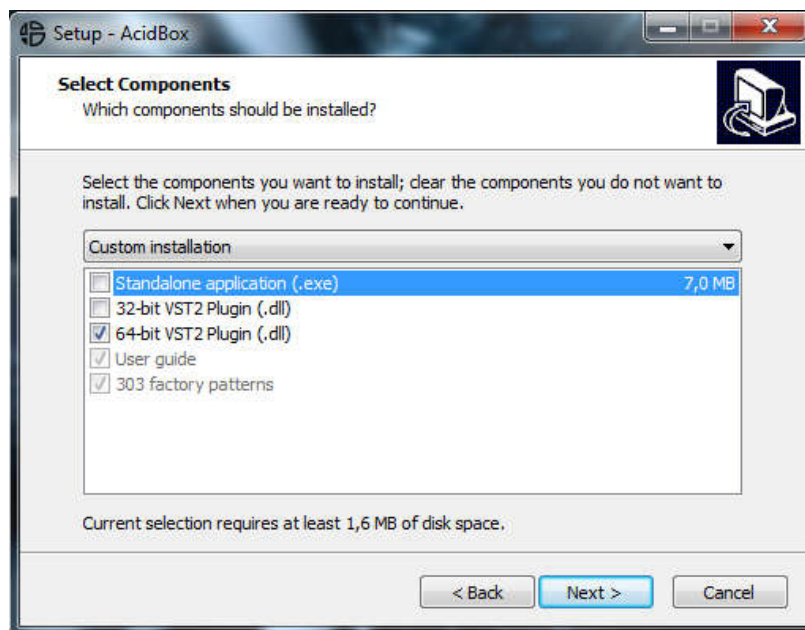
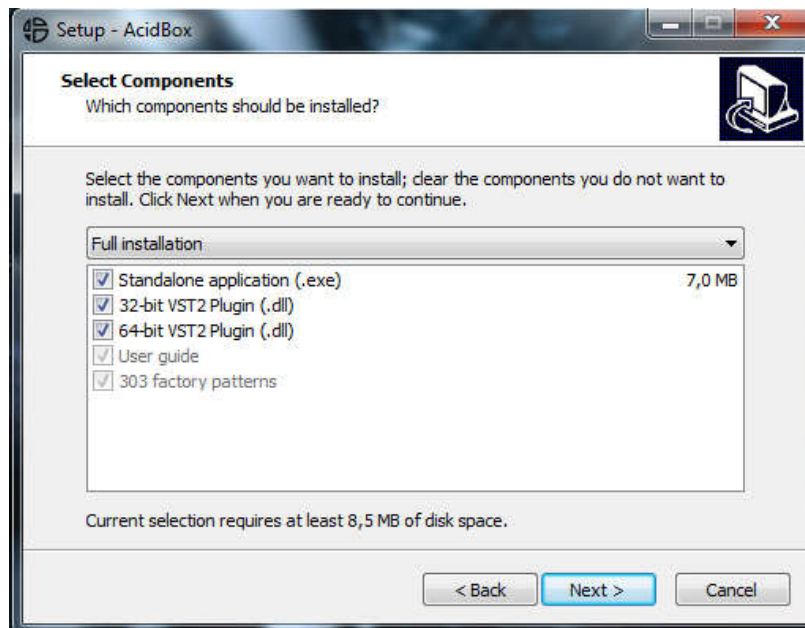
c) **Confirm the 64 Bit VST2 Plugin Directory**



As above you can choose your own directory by clicking the **“Browse...”** button, a browser window will appear, and then select your own folder.



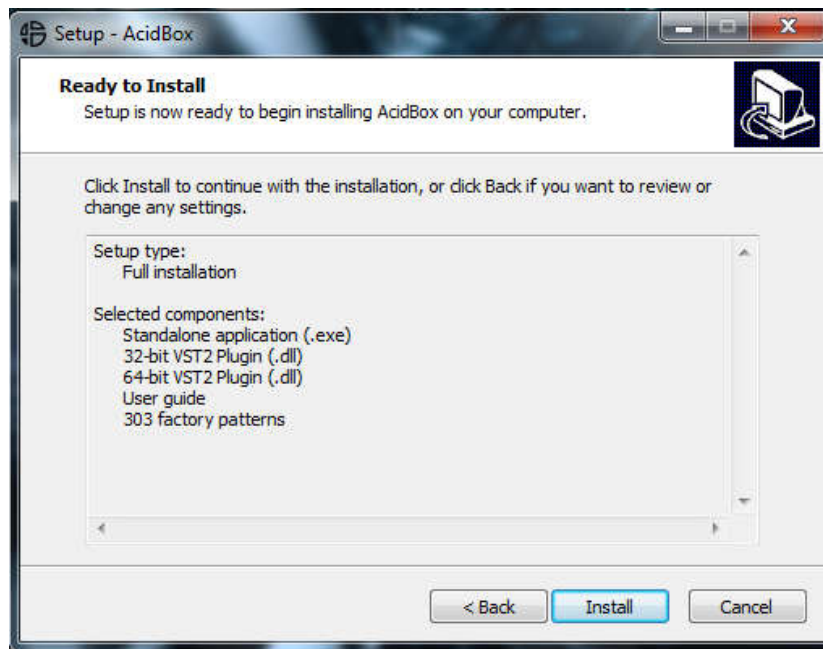
d) Select which components should be installed.



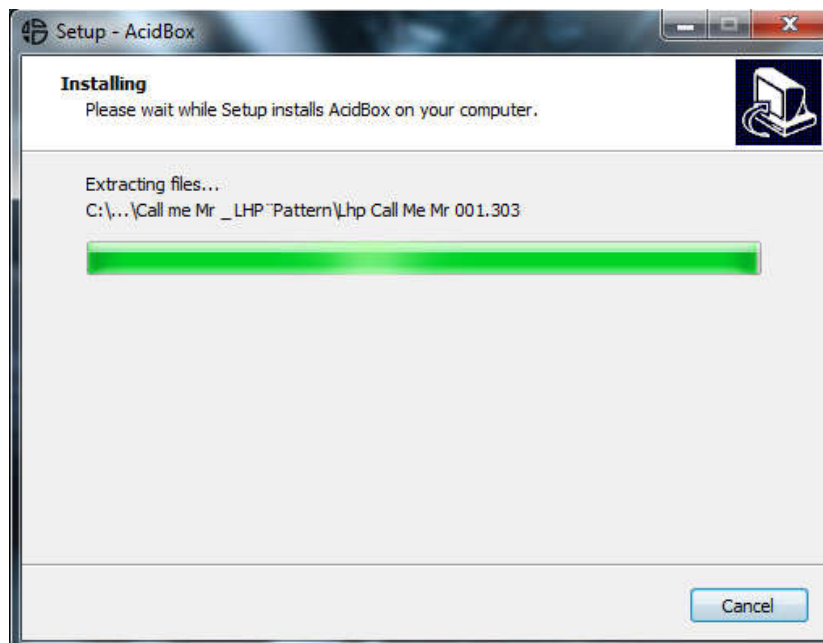
By clicking on the check box, choose which components to install.



e) Ready to Install

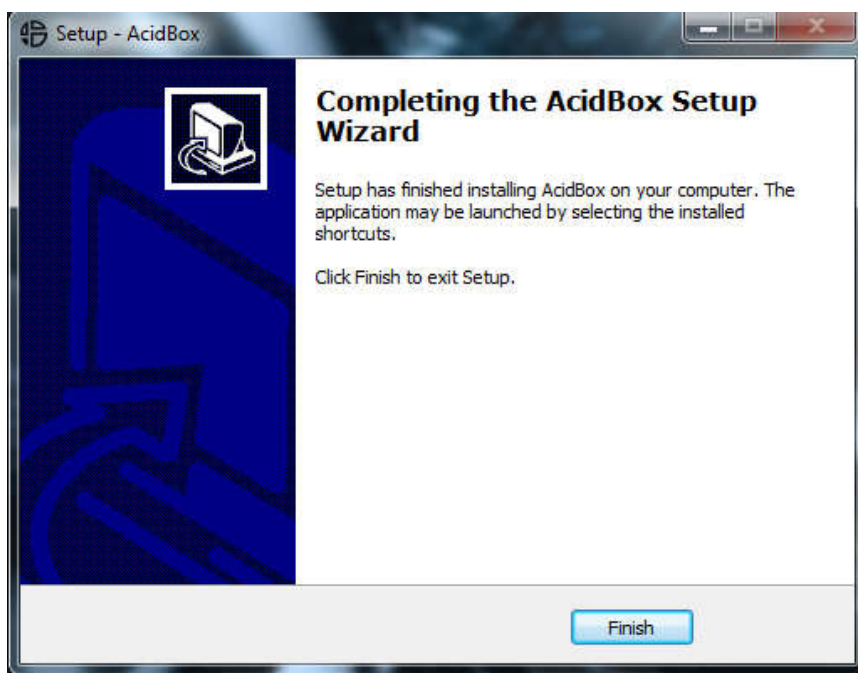


By clicking the “**Install**” button you will install the previous selected components.





f) **Finish the installation**

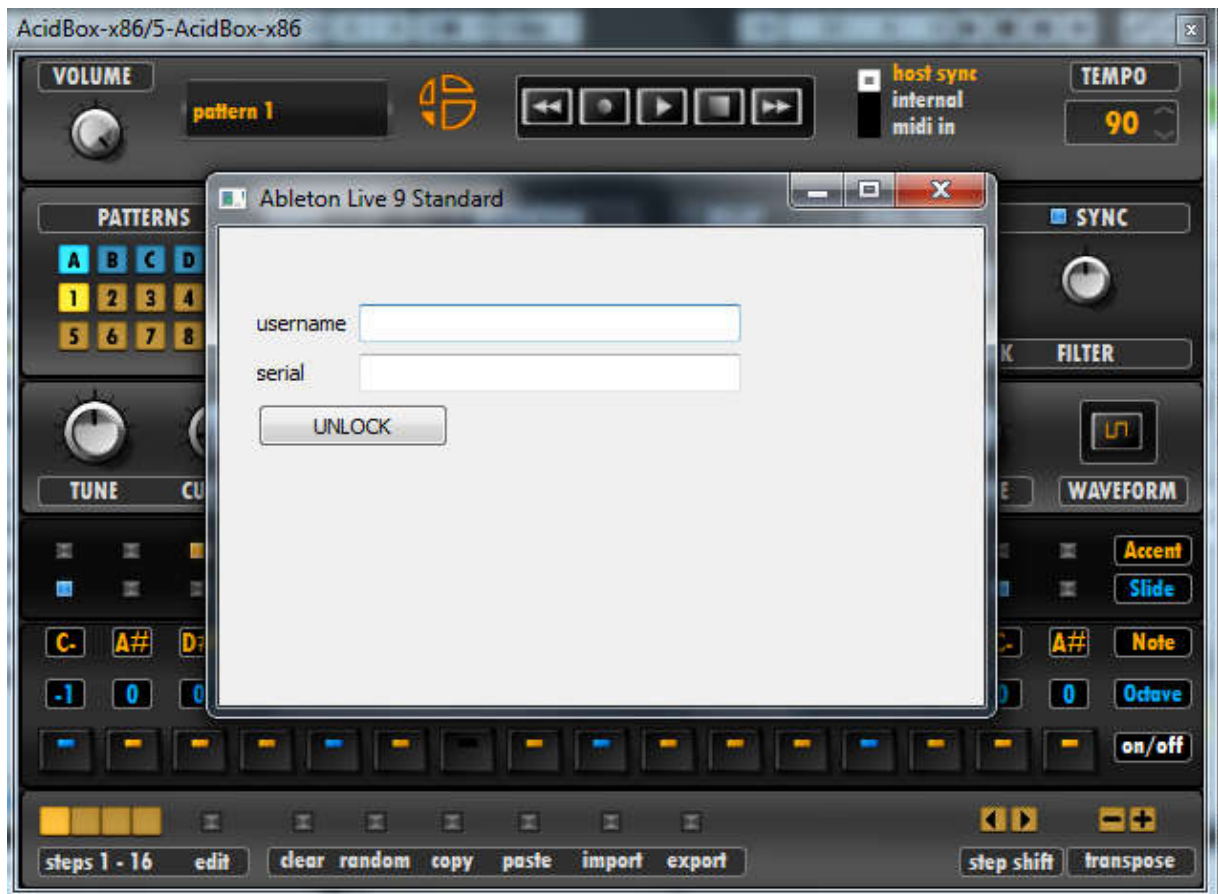


The plugins should appear in your host (after VST scanning or rescanning) under the Name: **“AcidBox-x86”** and **“AcidBox-x64”** in your VST plugins folder.



3) Activation

The first time you launch the AcidBox VST in your DAW the unlock window appear.



Enter your user name (ex : user@audioblast.me) and the serial you received by e-mail then press Unlock.

Until the VST is unlocked you will have no sound!

Once unlocked, the AcidBox is automatically host synchronised, just push the play button of your DAW and enjoy!



4) Panel Descriptions

3



Name	Explanation	Page	
1	TRANSPORT BAR		
	Volume	Adjusts the volume level	p.16
	Display	This indicates the pattern name	p.16
	Play Bar	Plays, stops, or records a sequence, or changes patterns with backward and forward buttons	p.16
	Sync	Selects the sync mode	p.16
	Tempo	Sets the Tempo	p.16



Name	Explanation	Page	
PATTERNS			
2	Pattern Selector	These buttons select a pattern	p.20
	Pattern Steps	Adjusts the pattern length	p.18
	Pattern Change on/off	Plays your sequence in MIDI with the keyboard, or changes patterns with MIDI notes	p.19
	Pattern Launch	Quantizes the launch of patterns	p.20
DISTORTIONS			
3	On/Off	Activates/deactivates the distortion, right click to select your distortion	p.22
	Drive	Adjusts the drive (parameters changes if you change distortion)	p.22
	Dry/Wet	Adjusts the Dry/Wet (parameters changes if you change distortion)	p.22
DELAY			
4	On/Off	Activates/deactivates the delay	p.23
	Ping Pong	Activates/deactivates the ping pong mode	p.23
	Sync	Activates/deactivates the delay sync	p.23
	Volume	Adjusts the Volume	p.23
	Time	Adjusts the time	p.23
	Feedback	Adjusts the feedback	p.23
	Filter	Adjusts the delay feedback Filter (turn left for lowpass, right for hipass)	p.23



Name	Explanation	Page	
5	SYNTHESIS BAR		
	Tune	Adjusts the tune	p.21
	Cut Off	Adjusts the Cut Off	p.21
	Resonance	Adjusts the Resonance	p.21
	Modulation Envelope	Adjusts the Modulation envelope	p.21
	Decay	Adjusts the Decay	p.21
	Accent	Adjusts the Accents	p.21
	Gate	Adjusts the Gate	p.21
	Groove	Adjusts the Groove	p.21
Wave Form	This button selects your wave form, square or saw tooth	p.21	
6	SEQUENCER		
	Accent	Adds or removes the accents of the sequence	p.18,19
	Slide	Adds or removes the slides of the sequence	p.18,19
	Note	To change the notes values on the sequence	p.18,19
	Octave	To change octaves on notes	p.18;19
On/Off	Adds or removes notes in your sequence	p.18,19	



Name	Explanation	Page
TOOL BAR		
Measures Display	Shows the measures advancement	p.24
Edit	Press this button to edit measures	p.24
Clear	Clears sequence	p.24
Random	Random sequence	p.25
Copy	copy sequence	p.24
Paste	paste sequence	p.24
Import	Imports a pattern or a bank of patterns	p.26
Export	Exports a pattern or a bank of patterns	p.26
Step Shift	Shifts the steps of the sequence to left or right.	p.24
Transpose	Transposes the sequence up and down.	p.24



5) Basic Operations

a) Synchronisation



There are 3 ways to use the Acid Box:

- “**Host Sync**” mode, to synchronize the plugin to the host.
- “**Internal**” mode, to use the plugin in the host but without synchronisation, with the internal tempo of the plugin..
- “**MIDI in**” mode, to use the plugin without the integrated sequencer.

The “**MIDI in**” mode changes the GUI, a keyboard will appear instead of the sequencer.

In this mode use the **AcidBox** as a classic synth, playing MIDI notes with an external keyboard or editing sequences with a D.A.W, MIDI notes will get an accent if velocity is over 81, and slides if you overlap these notes (p.19)



(* GUI/ graphic user interface)



b) The Play Bar



In “**Host Sync**” mode, play & stop buttons are controlled by the host, in the other modes, they are independent.

By pushing the **record** button you can record a sequence on the fly with an external MIDI in keyboard.

The **backward** and **forward** buttons allow you to change preset (previous or next) on the current pattern.

➤ Tempo



In “**Host Sync**”, tempo is set by the host, in the “**internal**” mode, it is independent.

In “**MIDI in**” mode there is no tempo synchronisation because the internal sequencer is not used.

➤ Display



This window displays the name of the current pattern.

➤ Main volume

Adjusts the main volume level using the volume knob.



➤ **Right click on the Logo**



Right Click on the LOGO to open the pattern list, then you can choose a folder to expand to see all the patterns inside.

➤ **Backward and Forward**



Click on the **“backward”** or **“forward”** button of the play bar to change patterns in the selected folder.



c) Sequencer

⇒ Write, record, edit a sequence

First, edit the length of the pattern from 1 to 64 steps.



⇒ There are 2 ways to make a sequence:



➤ Write a sequence:

First method is to write manually the sequence with the mouse.

Stay clicked on the note box you need to edit and move the mouse up or down to change the note. You can also click on the note box and scroll with the mouse wheel to edit the note.

The octave box is working as a note box.

To activate or deactivate a note, click on the pads of the “on/off” row.

You can adjust your sequence with slides and accents on their specific row, just by clicking on the leds above to activate or deactivate them.



➤ Record a sequence on the fly



Second way, is to activate the keyboard selector to record a sequence on the fly with an external MIDI keyboard. Once this mode is activated, you can play notes from **C1** to **A#5** and they will be recorded on the sequencer. You can also maintain a chord on the keyboard, and the chord will be written on the sequencer as a simple arpeggiator.

Notes **under C1** and **over A#5** inserts silent on the sequence.

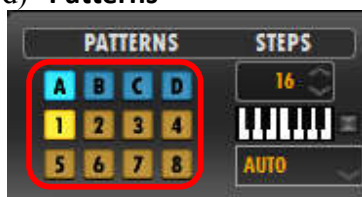
The velocity of the notes while recording defines the accents on the sequence. If the velocity is less than **82** you will get no accents, over **82 to 128**, you will get accents on recorded notes.

Using the pitch-bend while recording, adds or removes slides on sequence. Pitch-bend up to add slides, pitch-bend down to remove slides on the sequence.

- Available notes: C1 to A#5
- Available silent notes: C-2 to B0 and B5 to G8
- Velocity to get notes without accents: 0 to 81
- Velocity to get accents on notes: 82 to 128
- Pitch bend up: add slides
- Pitch bend down: remove slides



d) Patterns



➤ Pattern selector

There are 32 patterns on the Acid Box:

- **A:** 1 to 8
- **B:** 9 to 16
- **C:** 17 to 24
- **D:** 18 to 32

Click on these buttons to change patterns

You are allowed to right click on the patterns buttons to edit another pattern while the actually selected is playing.

➤ Setting the pattern launch



Click on the drop down box to choose the trigger synchronisation of the patterns.

- **AUTO:** starts the next pattern at the end of the current pattern
- **Free:** starts the next pattern immediately
- **1 step:** starts the next pattern one step after launch
- **1 beat:** starts the next pattern one beat after launch
- **1 BAR:** starts the next pattern one BAR after launch



➤ MIDI Launch:



Deactivate the keyboard selector to activate MIDI launch for the patterns.

Chromatic notes from **C-2** to **G 0** launch the pattern **A1** to **D32**

These notes can be used in a MIDI sequence on a D.A.W. to launch the selected pattern from **A1** to **D32**. Change Patterns writing these notes at the start of a MIDI event.

➤ Synthesis Bar



The synthesis bar allows you to change the sound of the sequence.

There are two basic oscillators you can choose:

- **Square**
- **Saw tooth**



There are 5 knobs to modify the sound:

- **TUNE:** changes the pitch of the overall pattern, from -1 octave to +1 octave
- **CUT OFF:** sets the cutoff of the lowpass filter
- **RES:** sets the resonance of the lowpass filter : turn it high for that **acid** sound !
- **M ENV:** sets the depth of the filter envelope
- **DECAY:** sets the decay length of the filter envelope

There are 3 knobs modify the sequence:

- **ACCENT:** sets the depth of the accent : accented note/step sounds louder, with a higher depth for filter envelope
- **GATE:** sets the length of the note/step
- **GROOVE:** add groove to the pattern sequence

Ctrl + click on each knob will reset the knob at their default value.



6) Effects

a) Distortion



To activate, or deactivate the distortion, push the led button in front of the label. There are two knobs to adjust the distortion level and the Dry/wet.

➤ Select an other distortion



Right Click on the “on/off” button of the distortion to open the selection menu.

There are 4 types of distortion you can select:

- **overdrive:** simple overdrive with dry/wet control
- **clipper:** double clipping unit, use the drive to add distortion and "scream" for a more fuzzy effect
- **valve:** oldschool overdrive
- **cruncher:** use drive to add distortion and adjust threshold to change the sound of the distortion

Ctrl + click on each knob will reset the knob at their default value



b) Delay



To activate or deactivate the delay, push the led button in front of the label.

To use the “**ping pong**” mode, push the led button in front of the label.

To use the “**sync**” mode, push the led button in front of the label.

There are 4 knobs to adjust the delay parameters:

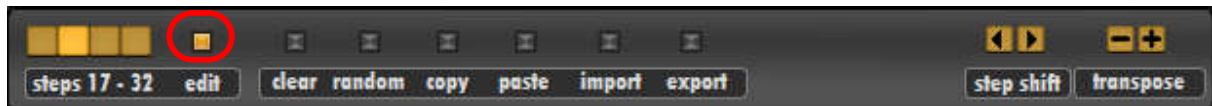
- **VOLUME:** sets the level of the delayed signal
- **TIME:** sets the delay time
- **FEEDBACK:** sets the level of signal reinjected in the delay line
- **FILTER:** turn left for lowpass filter, turn right for high pass filter

Ctrl + click on each knob will reset the knob at their default value

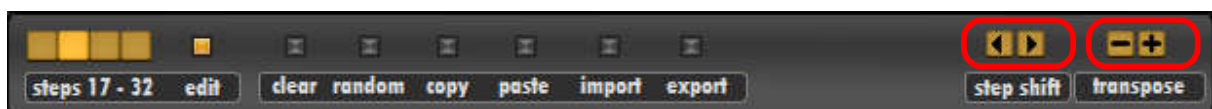


7) Tools bar

a) Edit



To edit the measures during playing, you can push the “**edit**” button to freeze the selected measure to edit.



You can move the MIDI notes left or right on the sequence pushing the “**step shift**” buttons.

To transpose up and down the entire sequence push the “**transpose**” buttons, all the sequences will be transposed.

➤ Clear, copy, paste

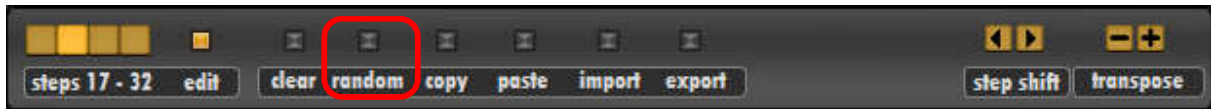


Pushing the “**clear**” button will clear the entire sequence.

To copy the current pattern or sequence on a other pattern push the “**copy**” button then change pattern and push the “**paste**” button on the new pattern to paste the selection.

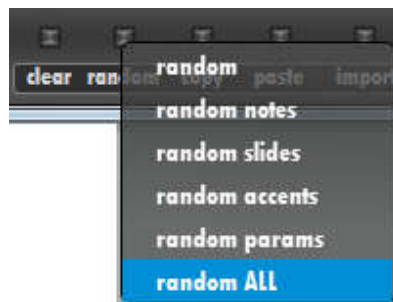


➤ Random



To simply randomize notes, accents and slides of the **Acid Box** you can push on the “**random**” button.

⇒ There is a second way to randomize only the selected parameters.

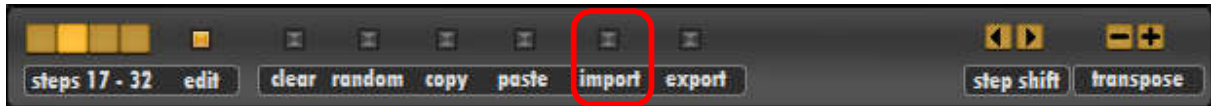


Right click on the “**random**” button and the random menu will appear showing you the available parameters to randomize each element.

- **random**: it random notes, accents, and slides
- **random notes**: it random notes only
- **random slides**: it random slides only
- **random accents**: it random accents only
- **random params**: it random parameters only (cut off, res, etc...)



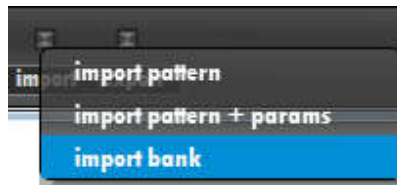
b) Import



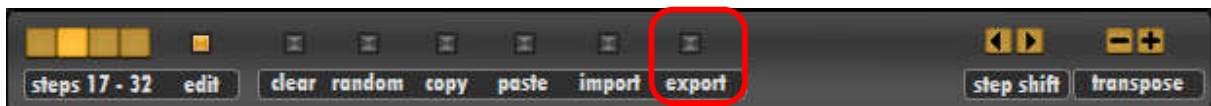
To import a bank of patterns or a pattern, click on the “**import**” button. A dialog box will appear and then you can select the path of your patterns or bank of patterns. **By pressing the left click to import a pattern, you will import the MIDI notes and the parameters.**

To import only MIDI notes without parameters, right click on the “**import**” button.

You can **right-click** on “**import**”, then, the **import menu** will appear, you can pre-select the format of the file you need to import, before opening the dialog box.

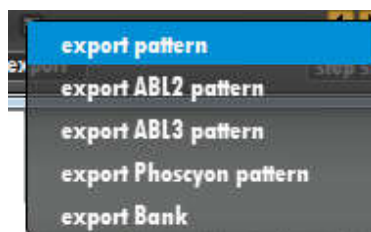


c) Export



To export a bank of patterns or a pattern, click on the “**export**” button. A dialog box will appear and then you can select the format and the path to save your patterns or bank of patterns.

You can **right-click** on “**export**”, then, the **export menu** will appear, you can pre-select the format of the file you need to export, before opening the dialog box.





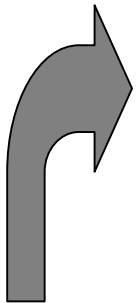
8) MIDI

a) MIDI in

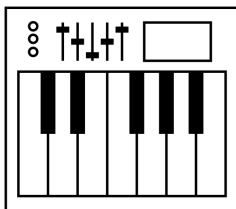
With the acid box, as told below you can use an external keyboard to play and record sequences on the fly.

b) MIDI out

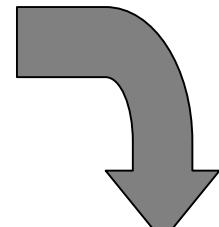
You can also send the MIDI OUT to virtual instruments or hardware external instruments



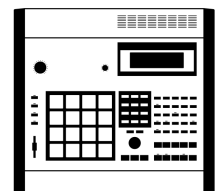
IN



(MIDI In external keyboard)



OUT



(MIDI out external device)